

## BioArk® Western Protein Marker I (Exposure)

Cat # : BAPM2086-250UL

### Product Information

| Product Name                        | Cat. No.       | Spec.  |
|-------------------------------------|----------------|--------|
| Western Protein Marker I (Exposure) | BAPM2086-250UL | 250 µL |

### Product Description/Introduction

Western Protein Marker I consists of eight high-purity recombinant proteins and two pre-stained recombinant proteins, which is convenient for monitoring of electrophoresis and transfer efficiency. It is suitable as a protein molecular weight standard for SDS-PAGE and Western Blot.

The bands display in Tris-Glycine gel range from 15-154 kDa (~12, ~22, ~28, ~38, ~50, ~62, ~70, ~78, ~113, ~154 kDa), with orange-red band at 70 kDa, blue band at 12 kDa, and the others can bind almost all types of antibodies (except chicken antibodies). Western Protein Marker I can bind the antibody to the target protein at the same time and develop color by ECL or other methods.

### Storage and Shipping Conditions

Ship with wet ice; Store at -20°C; Valid for 12 months.

### Product Components

| Component Number | Component                           | BAPM2086-250UL |
|------------------|-------------------------------------|----------------|
| BAPM2086-1       | Western Protein Marker I (Exposure) | 250 µL         |
| BAPM2086-2       | Dilution Buffer                     | 2×1 mL         |
| Manual           |                                     | One copy       |

### Assay Protocol/Procedures

1. Allow the tube to reach room temperature and thoroughly mix before use.
2. For the use of primary antibody of mouse origin, it is recommended to take this product 5 µL for simultaneous protein electrophoresis with the experimental sample; For the use of primary antibody of rabbit origin, it is recommended that 5 µL of this product be diluted 4 times with the supplied Dilution Buffer and the samples be subjected to simultaneous protein electrophoresis; It is suggested that qualified laboratories can determine the appropriate sample amount by pre-experiment according to their own experimental conditions and experimental habits when using this product for the first time, which can not only save costs, but also obtain better results.
3. Prestained Protein Marker II should be stored at -20°C immediately after use. (It is recommended that be stored separately).

### Notes

1. If the Western protein marker I exposed band is thick, it can be used after appropriate dilution with the buffer. It is normal for the color of the two prestained protein bands in the marker to diminish accordingly after dilution.
2. This product cannot be heated, which will cause the protein bands to degrade or discolor.
3. For your safety or health, please wear safety glasses, gloves, or protective clothing.

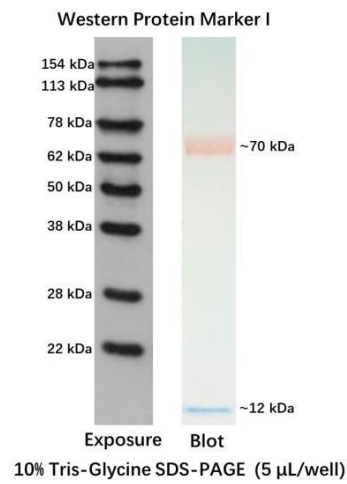


Fig 1. Reference molecular weight of Western protein marker I

For Research Use Only!